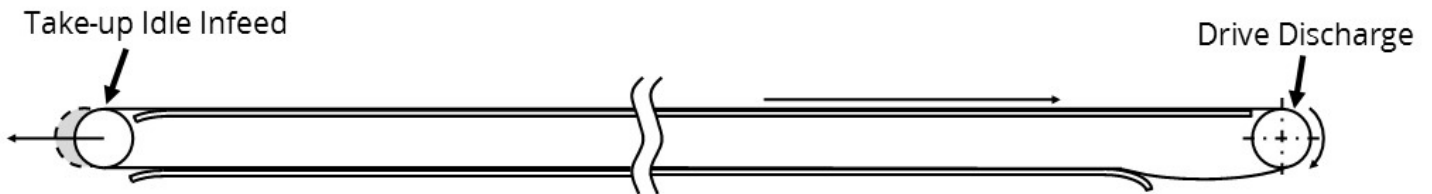


Ladder-Track™ Conveyor Design Guidelines

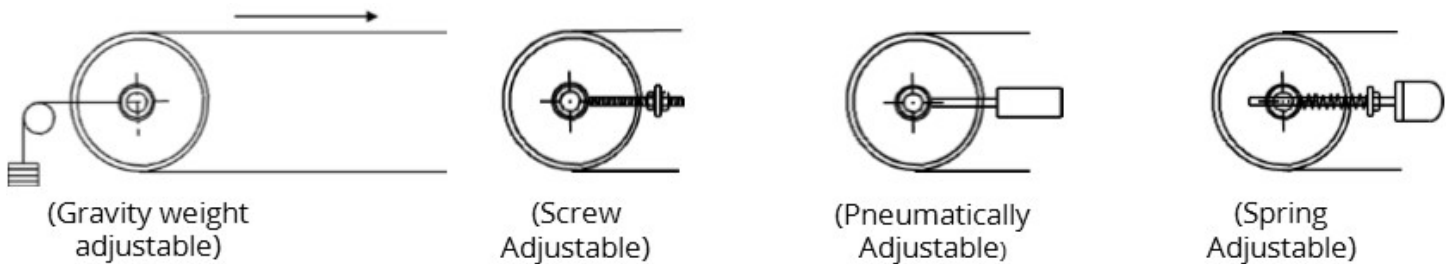
Straight Running - Positively Sprocket Driven

Typical Belt Circuits

Simple Loop Circuit

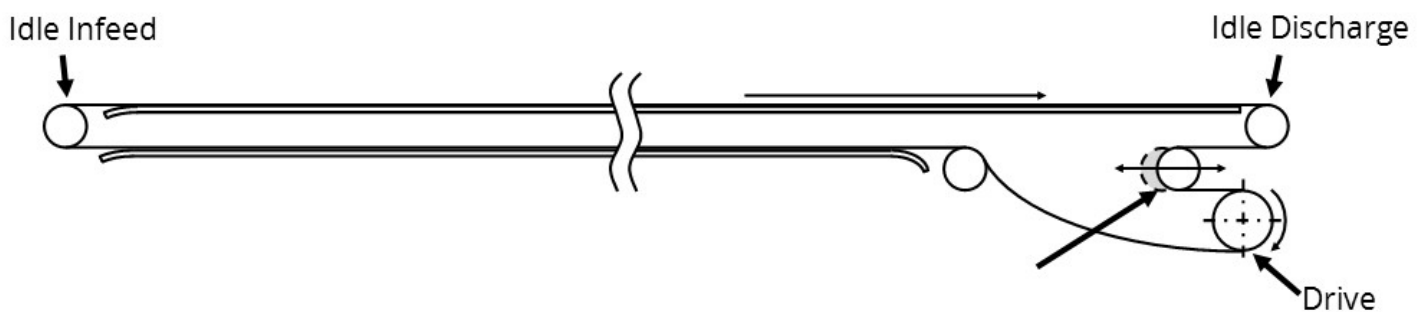


Idle Infeed Take-up Options:

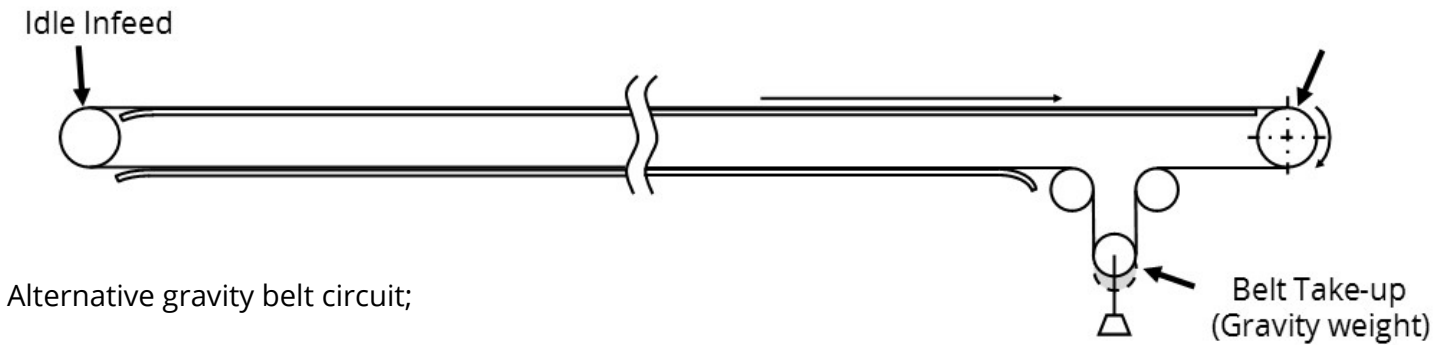


NOTE: Ensure that belt take-up adjustment is the same on each side of the conveyor.

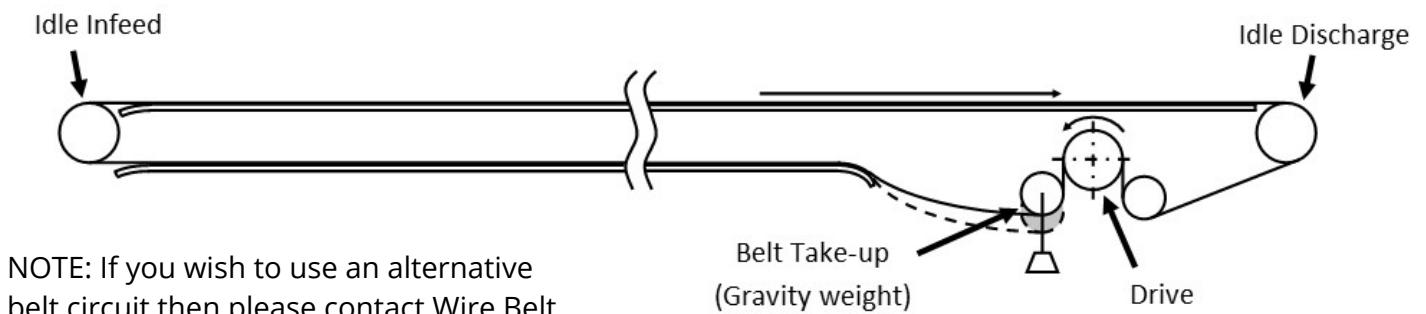
Fixed Centers with Return Way Screw Take-up Circuit



Fixed Centers with Return Way Gravity Take-up Circuit

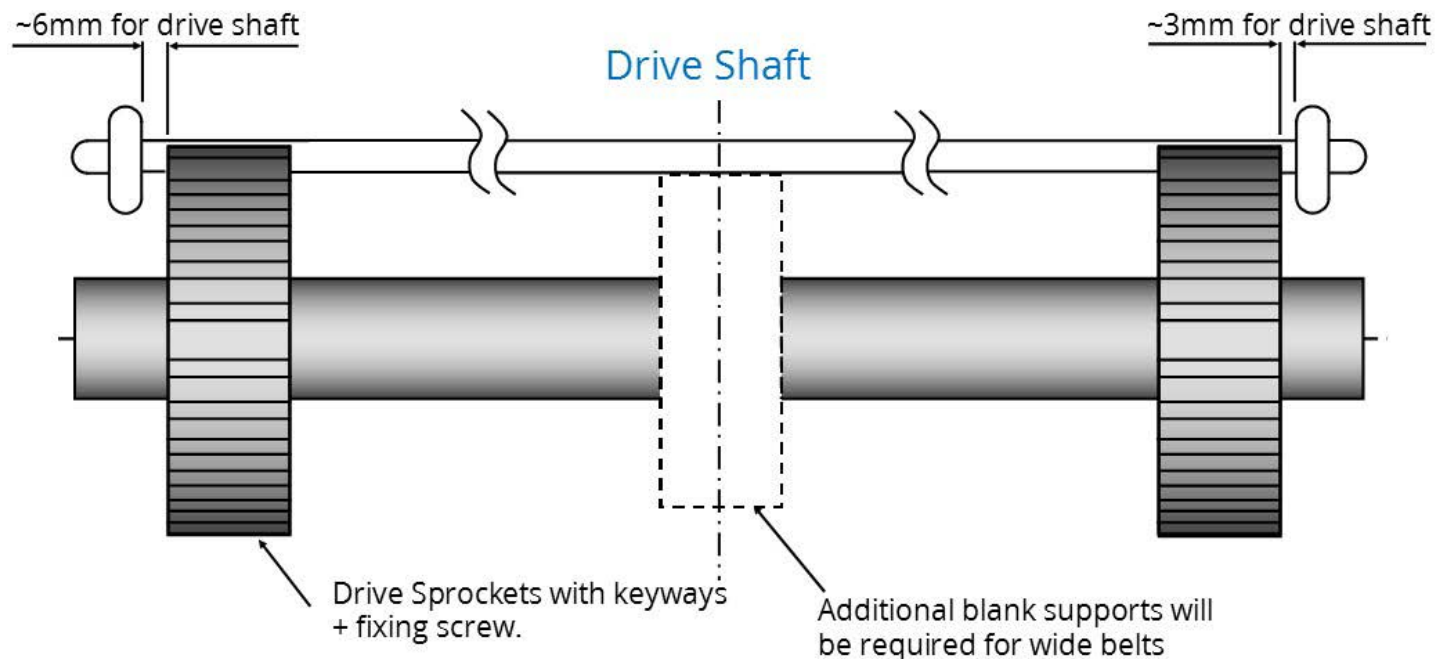


Fixed Centers with Return Way Gravity Take-up Circuit

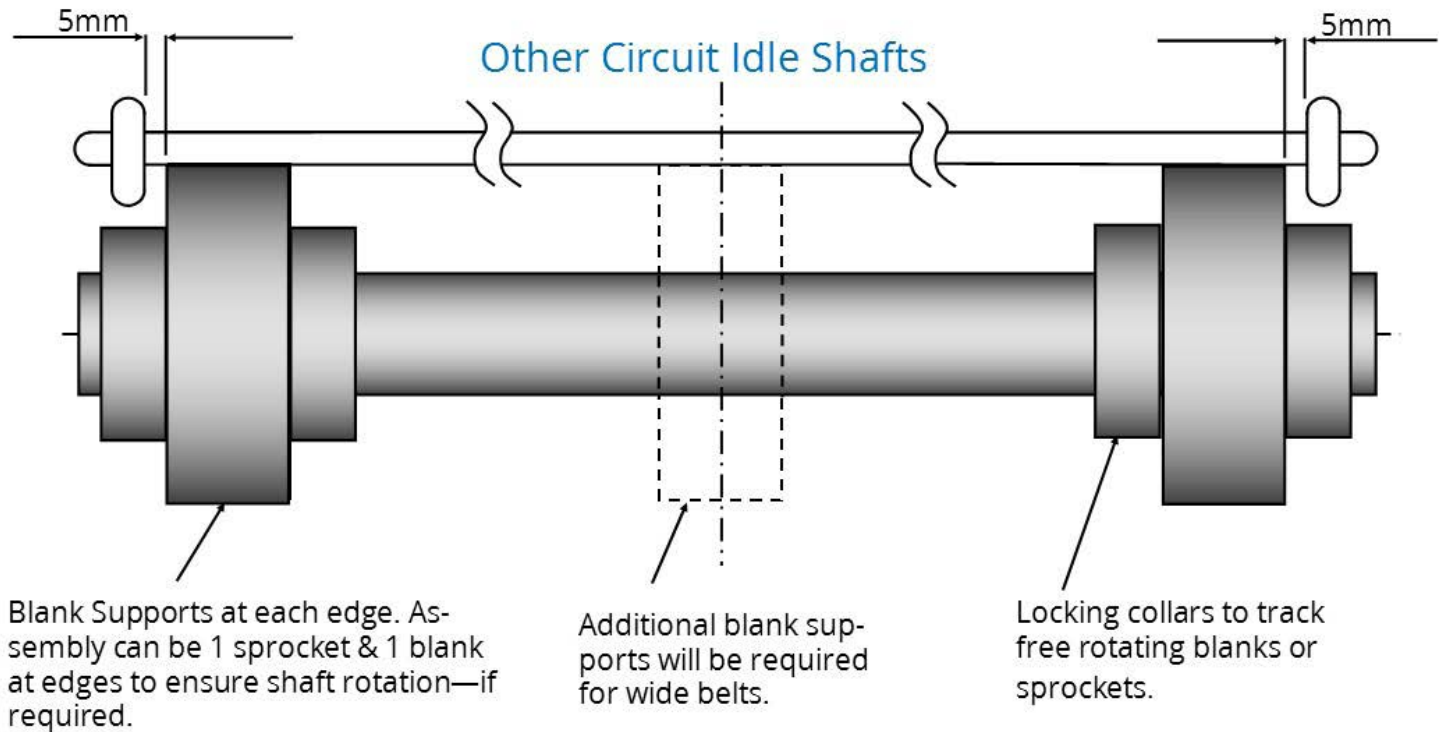
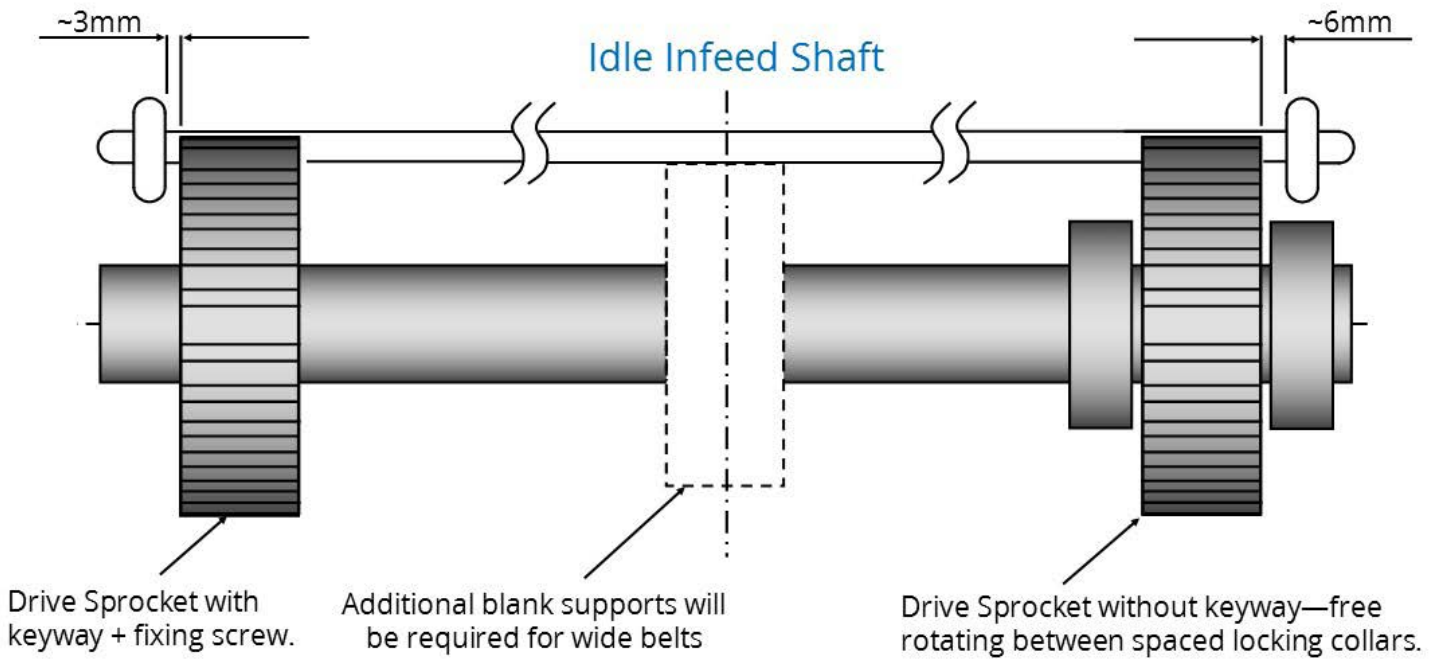


NOTE: If you wish to use an alternative belt circuit then please contact Wire Belt Technical Sales to discuss your options.

Drive, Idle Infeed & Other Circuit Shafts Setup



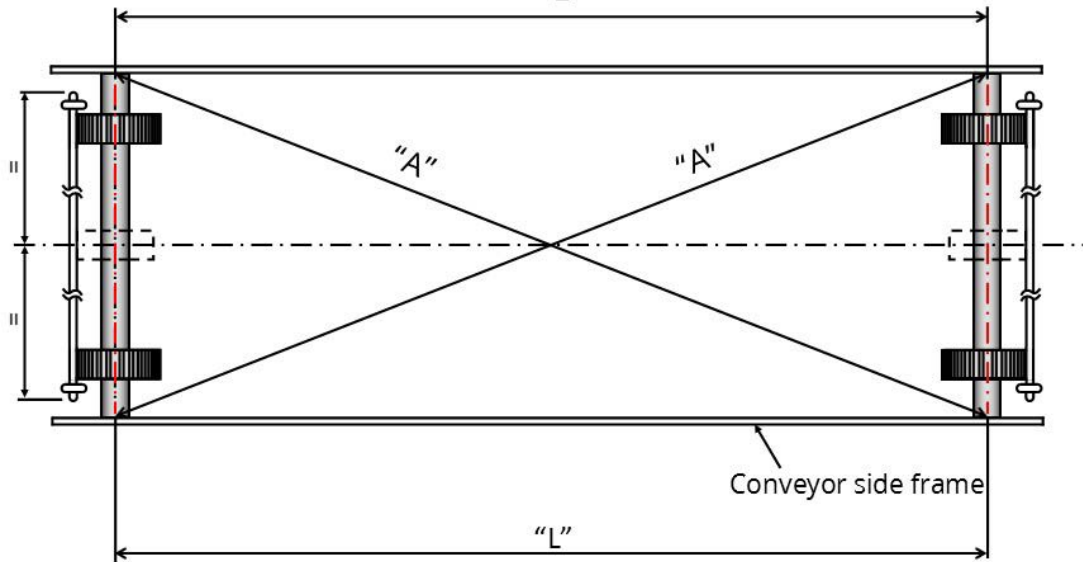
Drive, Idle Infeed & Other Circuit Shafts Setup



Conveyor Alignment

The conveyor should be set up to run with all shafts parallel and level to each other.

- Make sure all support beds are level and align with the sprocket tooth root dia.
- Ensure that the conveyor framework runs straight between the idle infeed and the discharge (drive) shaft and that the belt take-up mechanism operates in parallel motion.
- Ensure belt support surfaces are free from obstructions (e.g. protruding framework).



Belt Supports (Typical Arrangement)

